



CITY OF CARSON PLANNING DIVISION

Guide to Single-Family Artificial Turf Installation

The City permits the installation of Artificial Turf subject to the approval of the Community Development Director. A site plan and a sample of the synthetic turf proposed must be reviewed and approved by Planning along with the following conditions:

- Synthetic turf must consist of lifelike individual blades of grass that emulate real grass in look and color and has a minimum pile height of 1-3/4".
- A proper drainage system shall be installed underneath the turf to prevent excessive run-off or pooling.
- Synthetic turf shall be installed and maintained to effectively simulate the appearance of a well-maintained lawn.
- The use of indoor or outdoor plastic or nylon carpeting as a replacement for synthetic turf or natural turf shall be prohibited.
- **Synthetic turf shall be installed in combination with only natural plant materials (i.e. trees, shrubs and groundcover) to enhance the overall landscaping design.**

EXAMPLE ONE



EXAMPLE TWO



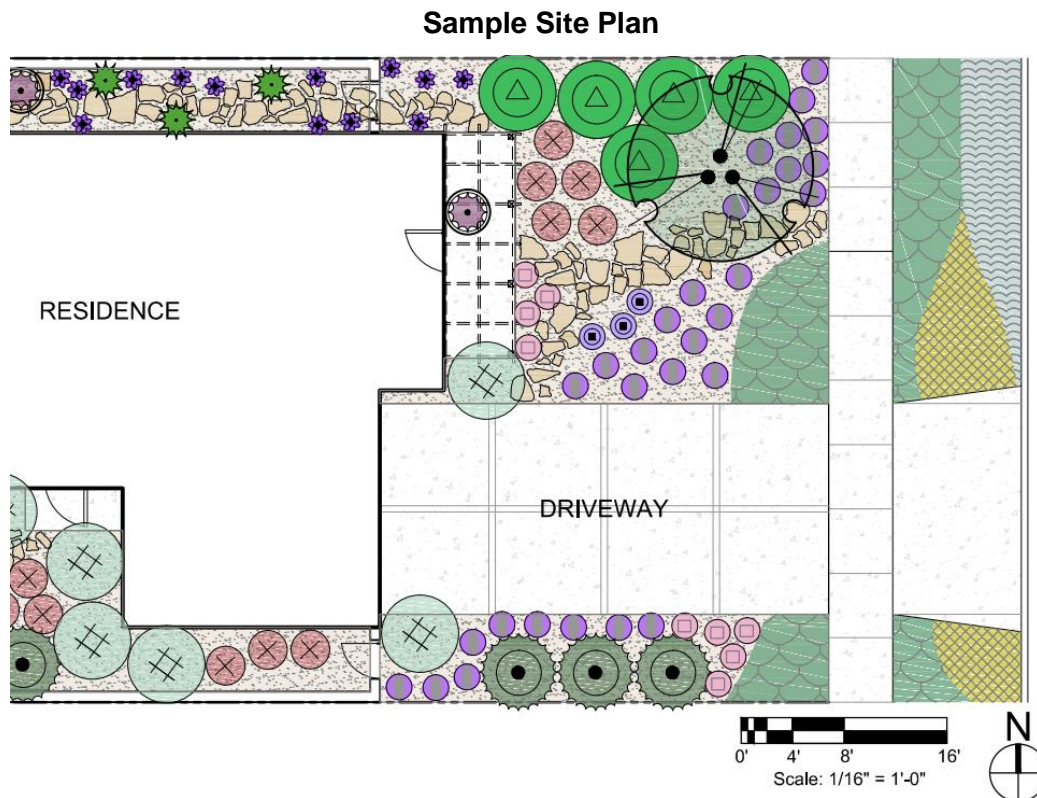
Landscape Plan Guidelines

Please address the guidelines below and submit the following:

1. A detailed site plan on 8 ½" x 11" paper with the property dimensions and location of buildings depicting front yard landscape (plant size, plant type and location) and hardscape.

General Guidelines:

- The use of drought-tolerant landscaping materials is encouraged.
- Organic mulch should be installed and maintained at a minimum depth of 2 inches and a maximum depth of 4 inches on all planted areas except where groundcover plants are fully established.
- Landscape design may integrate hardscape (paths, trails, courtyards, etc.), in accordance with the limits on hardscape provided in CMC Section 9162.3.
- California Friendly Landscaping trees and plants are encouraged. Information available at: <http://www.ladwp.cafriendlylandscaping.com/> and <http://www.bewaterwise.com/>



Reference: <http://www.ladwp.cafriendlylandscaping.com/> (Design for LA Basin)